

**Trelissick Park Group: Minutes of the 201<sup>st</sup> Meeting, held at Ōtari Wilton's Bush Visitor Centre, 9:30 a.m. Tuesday 7 March 2023**



**Abbreviations:**

WCC	Wellington City Council	PFW	Predator Free Wellington
GW	Greater Wellington Regional Council	OHS	Onslow Historical Society
F & B	Forest and Bird Protection Society	OWB	Ōtari Wilton's Bush
HPPA	Highland Park Progressive Assoc.	CVNZ	Conservation Volunteers NZ
TPG	Trelissick Park Group	BotSoc	Wellington Botanical Society
NCDRA	Ngaio Crofton Downs Residents' Association	DoC	Department of Conservation
WRA	Wadestown Residents' Association	WW	Wellington Water
OMB	Old man's beard	ORCA	Onslow Residents' Community Association
VW	Volunteer Wellington		

[Square brackets: subsequent to meeting.]

**Actions are in bold italics.**

**Present**

Peter Reimann (TPG)	Anne Tuffin (TPG)
Debbie Hawker (WCC)	Ian Shearer (HPPA)
Tim Park (WCC)	Jenny Lewis (WRA)

**Apologies**

Angus Napier (F&B)	Jonathan Anderson (WCC)
Cat Ayres (Zealandia)	

**Minutes**

The minutes of the 200<sup>th</sup> meeting, held on 8<sup>th</sup> November 2022, were confirmed.

**WCC Items**

Fish Passage improvement in catchment – Further to the fish passage study described in the minutes of the TPG meeting 29 June 2021, Daniela Biaggio advises that GW, in partnership with WCC, Ngati Toa, and others, were successful in securing fish passage funding from MFE. The report identified the downstream ramp from the tunnel under the oil tanks downstream of the park as a major barrier. GW/WW have looked at retrofitting options. GW is doing a trout survey (concerned that better fish access might introduce a trout problem upstream). Further updates are awaited. **Jakob Lechner/Daniela Biaggio**

Ngaio Gorge Road Stabilisation Project – Due to wet weather, **the scheduled completion date is now mid-April 2023**. The lower Ngaio Gorge Road entrance to the park is open, allowing access for animal pest control and scheduling weed control/working bees.

A contractor will carry out restoration planting at entrance 6. Details and timing to be advised. **Adam Groenewegen**  
The shelter, gate and rocks will be reinstated at the entrance.

No planting will take place in the area immediately behind the retaining walls to facilitate future inspections and maintenance work.

For more information, photos and a video, see Projects – Ngaio Gorge stabilisation – Wellington City Council.

Ngaio Gorge Road cycle lane construction proposal – This appears to include 15 car parks at the former lay-by area at entrance #5 (half-way up Ngaio Gorge Road). The bicycle lane work will take place over the next 2-3 years. TPG is concerned about the reduction in car parking near entrance 6 at Kaiwharawhara Road.

Dog Control update – Formal consultation begins in early 2023. **WCC**

**Storm Problems**

- Bank erosion affecting vehicle track alongside Kaiwharawhara Stream – A safety barrier next to the vehicle track has been extended. Rock armoring of this section is proposed. **Tim Harkness**
- Track gouge on Northern Walkway below Hanover Street – A contractor has installed a culvert and reinstated the track.

**Other track improvements**

- Completed: diversion above bank erosion downstream of debris trap.
- The canyon track downstream of bridge 6 will be upgraded over the next 6-12 months. **Tim Harkness**

Debris trap remediation – Adam Groenewegen has asked WW to remove debris from the trap and to fix the rails (two leaning over and a large gap). The design may need a re-think, due to increased run-off from hard surfaces from infill

housing in the large catchment, coupled with climate change downpours, which are exacerbating the problem. Adam Groenewegen is following this up. **Adam Groenewegen**

### **Pest Plant Control**

Tradecantia Control by WCC/contractor – Kaitiaki o Ngahere has sprayed tradescantia with a new chemical. It takes a few days for the effects to show. It would aid safety for TPG volunteers to know when and where areas have been sprayed, so that TPG can avoid manual removal there. Blue dye in the chemical helps. **Illona Keenan**

OMB control by WCC/contractor – Angus Napier is entering OMB on both sides of Ngaio Gorge Road and along the Kaiwharawhara Stream down from entrance 6 into iNaturalist and the 'Weed Management Aotearoa NZ' project. This keeps Old Man's Beard Free Wellington informed ([www.ombfree.nz](http://www.ombfree.nz)). They may be able to assist with eradication. He is also giving grid references on the park map. **Angus Napier**

Illona Keenan has contacted Countdown and KiwiRail regarding a Kaitiaki proposal to control OMB outside Countdown and on railway land. **Illona Keenan**

Control by TPG – TPG continues with manual control of tradescantia, OMB, Himalayan balsam, cherry, wattle, karaka seedlings, sycamore, bindweed, blackberry, climbing dock and buddleia by individuals, working bees and groups.

### **Nursery/planting update**

Planting under pylon next to Northern Walkway – This planting, not by any TPG member, includes some non-endemics. Adam Groenewegen prepared a sign to be placed at the pylon concerning removal. **Adam Groenewegen**

Plant ordering from WCC for 2023 – 500 due for delivery 12 May. Species are for the Trelissick Crescent verge, streamside for under and downstream of bridge 7 and along the Waikowhai Street verge. These include 5 kahikatea, which could replace other species lost at the 51-trees memorial site.

### **Animal Pest Control**

Traps – Totals from 2008: 22 stoats/weasels, 587 rats, 18 hedgehogs. Richard Grass now services the DOC200 traps in the Korimako valley. The above totals do not include recent A24 kills. After a park visit with Bill Hester, WCC's Debbie Hawker is entered all trap locations/results (including historical) into the Trap.nz system. **Debbie Hawker**

Graham Elmes reported in November that a dead stoat was found on Ngaio Gorge Road [and another in a Victor trap at 37 Ngaio Gorge Road].

Bait Stations – A recent diminished consumption of block bait by rodents in the 30 bait stations. TPG has tended bait stations in the park monthly for at least 14 years.

Rabbits – Often seen on or below Trelissick Crescent. Tim Park has advised that spray-on Plantskydd (<https://www.plantskydd.com/>) is effective at Ōtari Wilton's Bush (but expensive).

### **Kaiwharawhara Estuary – New ferry and rail facilities – [see map in Appendix on p.6]**

The final decision on the consent application was issued on 25 January. In summary:

1. Rail lines extended onto reclaimed strip below the motorway. What's left of the northern beach to be reinstated.
2. Southern half of Kaiwharawhara Point (KP) to become vehicle marshalling area.
3. South bank of KP to be realigned to give more space for the stream and to encourage a salt marsh habitat.
4. Reduce/remove channelisation at the mouth of the stream.
5. Cobble beach along the east and south of KP.
6. Vegetation along the margins of KP and the estuary.
7. Two piled groynes between the estuary and the new wharf.

Early construction started in September focussed on moving and flattening material on Kaiwharawhara knoll in preparation for the main works construction due to start mid-2023 and be completed in time for the first new ferry's arrival in mid-2025. A video [Watch the video](#) explains the biodiversity plan.

### **Sanctuary to Sea Project**

Cat Ayres of Zealandia has initiated some business and community volunteering as part of the Sanctuary to Sea project in the Feb-March period during the working week or Saturdays. Cat is also exploring clean-up options in the lower catchment in the areas next to business premises, such as School Road.

She met with businesses in November. (Reminder: rubbish below railway at Crofton Downs station blown in from Mitre10). Businesses recruited: The Living Room, Mitre 10, Cogo, ACC. (See also under 'Groups in park' below)

### **Cat Ayres**

Cat has lodged a submission on the draft WW Stormwater Management Strategy after consulting with catchment groups, including TPG.

### **Submissions**

WCC Proposed District Plan – For summary of TPG submission, see November 2022 minutes.

Hearing Stream 2 participation: Following TPG submission, WCC has deleted the permeable surface requirements from LLRZ-S8, MRZ-P9 and HRZ-P9, stating that THW (Three Waters) is a more appropriate section to consider these aspects. THW and SUB (which cover the rest of TPG's comments) are considered under Hearing Stream 5,

commencing 31 July. TPG has requested more information on the assessments of THW and SUB under Hearing Stream 5 in due course. **WCC's Jaskirit Kaur**

Draft WW Stormwater Management Strategy – TPG's submission supported Cat Ayres' Kaiwharawhara catchment-wide submission, which took into account TPG's comments. Those of referred to are:

- Tunnel daylighting possibilities along Korimako Stream (although expensive/disruptive)
- Infill planting and Churchill Reserve restoration
- Vegetated swales, filter strips, infill trenches, sand filters, treepits/planter boxes, and pervious pavements
- Community mobilisation, volunteering, public education and clever communication
- More emphasis on flooding/scour/sediment control, which also affects water quality
- Need for more than stormwater run-off neutrality in new developments, particularly for infill housing.

TPG are concerned that in a few decades the catchment will be all houses and no bush.

### Correspondence with External Parties

Recent resource consent web alerts	WCC and GW
VW workshops/events/volunteers/TPG update	Julie Thomson/Clare Teal/Ann Thomson (VW)
Rubbish collection	John Curran (WCC)
Fish passage improvement	Jakob Lechner (GW)
Business and community volunteering in TPG with Sanctuary to Sea	Cat Ayres (Zealandia)
Predator Free Wellington Impact report 2022	Eleanor Dewar (PFW)
Predator Free Wellington funding round	Eleanor Dewar (PFW)
Looking for volunteers for TPG	Chris Horne (BotSoc), Ian Turk (NCDRA)
Pest plant control	Illona Keenan/Adam Groenewegen (WCC)
Ngaio connection project – car parking Kaiwharawhara area	Adam Groenewegen (WCC)
Faulty Victor traps	Eleanor Dewar (PFW)
Trelissick Crescent road works and mulch for verge	Adam Groenewegen (WCC)
Dumping garden waste off Trelissick Crescent and 'no dumping' sign	Adam Groenewegen (WCC)
Consent notifications	GW, WCC
Duke of Edinburgh award work	Alex Thompson, Troy Thompson
CVNZ visit to park	Sonja Urban/Simerrah Habib (CVNZ)
Debris trap clearance/fix	Adam Groenewegen (WCC)
NZ Post Kaiwharawhara depot noise at night	Sunui Fialua (NZPost), Lucy Alcock
Signs of possum activity above Ngaio Gorge Road	Debbie Hawker (PFW) Henk Louw/Adam Groenewegen (WCC)
Stoats caught on Ngaio Gorge Road	Graham Elmes
Pylon garden	Adam Groenewegen (WCC)
Podocarp plant order/karaka removal	Adam Groenewegen/Jonathan Anderson/Anita Benbrook (WCC)
Kaiwharawhara Wellington Ferry Terminal Update and consent conditions	Wellington Ferry Precinct Team, Cat Ayres (Zealandia)
Z Energy	Tarita (Z Energy)
Park visit re stormwater	Eugene Doyle, Martin Payne, Annie Yates
Weed control along railway corridor and next to Countdown	Illona Keenan/Adam Groenewegen (WCC), Ruth Brittain (Kiwirail), Countdown, Old Mans Beard Free Wellington, Kaitiaki Restoration
Track gouge on Northern Walkway below Hanover Street	Tim Harkness/Adam Groenewegen (WCC)
Cutting new track above eroded section down from debris trap	Tim Harkness/Adam Groenewegen (WCC)
Name gift from Mana Whenua	Eugene Doyle (Te Hononga - Wellington Catchments Collective)
Draft WW Stormwater Management Strategy	Lyn Cadenhead (Tyers Stream Group), Cat Ayres (Zealandia), Martin Payne (Ohiro Stream Group), Eugene Doyle (Te Hononga - Wellington Catchments Collective), Annie Yeates
Information on park washout below debris trap	Frank Neill (Independent Herald)
Trelissick Park volunteering	Anna Pullen (FMG)
Stormwater workshop	Emily Greenberg/Angela Penfold (WW)
Mitre 10 volunteering	Sandy Gaylard (Mitre 10)
Axienic group in park 24 March	Linda Ashton (Axienic), Ann Thomson (VW)

Weeding 51 trees commemorative spot	Kumar Kumareswaren (Sathya Sai/Interfaith Groups)
Donation to TPG and fish passage suggestions	Tracey Gabbitas (The Hugo Group), Nicola Willis (MP), Daniela Biaggio/Henk Louw (WCC), Jakob Lechner (GW)
Display at Wadestown Fair 11 March	Greg Hyland (Wadestown and Highland Park Residents Associations)
Oser Galler plaque and new seat at bridge 7	Charles Dawson
Hikoi through Waimapihi	Eugene Doyle (Te Hononga - Wellington Catchments Collective)
ACC group in park	Sharelle Kooyman (ACC)
Draft Wellington District Plan submission	Jaskirat Kaur/Freyja Macgregor (WCC)
Zealandia's and TPG's submissions on Draft WW Stormwater Management Strategy	Cat Ayres (Zealandia), Emily Greenberg (WW).
Tiakina te Taiao- the future of Biodiversity in Pōneke Workshop 15 December	Daniela Biaggio (WCC)
Kia Mouriora te Kaiwharawhara/Sanctuary to sea Community hui 21 March	Uenuku Phillips (Zealandia)
Minutes from November Sanctuary to Sea Community hui	Cat Ayres (Zealandia)
Cogo group in park 2 March	Cat Ayres (Zealandia), Renee Olsen/Brian Johnstone (Cogo)
Employee Volunteer introduction and update	Ann Thomson (VW)
FMG to work with CVNZ instead	Anna Pullen (FMG)
'Onslow Historians' on-line and OHS link on TPG website	Keith Flinders (OHS)
More information on Oser Galler (re his plaque found in park) and David Galler's book	David Zwartz, Peter Baruch
Commemorative seat	Jacqueline Murray/Adam Groenewegen (WCC)
Plant order from WCC	Anita Benbrook/ Adam Groenewegen (WCC)
Bike lane project effect on parking (entrances 5 & 6)	Ngaio Connection Project (WCC)
Weed control below entrance 4	Illona Keenan/Adam Groenewegen (WCC), Stu Whiterod (Kaitiaki)
TPG advise no need to participate in Draft Wellington District Plan Hearing Stream 2	Jaskirit Kaur (WCC)
Restoration of Waikowhai Street verge	Adam Groenewegen (WCC)
[Rotten/confusing dog exercise maps]	[Adam Groenewegen/Tim Harkness (WCC)]
[Meeting information]	[WCC Councillor Ray Chung]

Newsletters – VW, NCDRA, Friends of Tawa Bush Reserves, CVNZ, Bells Track Group, PFW.

### Finance

The bank balance currently stands at \$1,143.80.

### Other

#### Groups in park

Friends of Owhiro Stream – A conducted tour of Kaiwharawhara valley on 4 January, sharing common stream problems.

CVNZ visited the park on 24 January. Another visit is to be advised. **Sonja Urban (CVNZ), Angus Napier (F&B)**

The Interfaith Group tended the '51 memorial trees' spot on 26 February.

Cogo - Six people from Cogo, along with Zealandia's Cat Ayres who recruited them, cleared tradescantia alongside the vehicle track in the valley upstream of the new bridge 7 on the afternoon of 2 March.

The Living Room had to defer clearing #57 Kaiwharawhara Road due to lack of staff availability. TPG cleared the area instead at the 12 February working bee.

ACC have 20-30 people coming to work in the magazine building area – date to be confirmed.

Axenic – Due to visit on 24 March, weeding from Trelissick Crescent entrance 3 and then down to the valley as far as bridge 3.

Mitre 10 – Discussions between Mitre 10 and Zealandia's Cat Ayres ongoing. **Cat Ayres**

Z Energy– Decided to go to Ohiro Bay instead.

FMG – To work with CVNZ instead.

Tiakina te Taiao- the future of Biodiversity in Pōneke Workshop – Views were canvassed (positive/negative) by a selection of restoration group representatives. Peter Reimann attended - positive: excellent relationship with WCC,

negative: concerned about stream erosion due to stormwater run-off from hard surfaces in catchment, stream pollution and garden waste/rubbish dumping.

Donation from the Hugo Group – MP Nicola Willis nominated TPG as recipient of a \$500 ‘thank you’ for her address to the Hugo Group. Ideas are needed for use. **TPG**

One idea: lights in the tunnel for Kaiwharawhara Stream under the motorway to encourage fish passage. GW’s Jakob Letchner is investigating. **Jakob Letchner**

Other ideas - interpretive signs next to major trees, like those installed for Friends of Tawa Bush Reserves in Redwood Bush. Tim Park suggested cheaper options. Or an audio link for visitors’ mobile phones to provide information or history (possible source WCC’s Gabor Toth – audio library). **Anne Tuffin**

Encouraging more volunteers – Chris Horne (BotSoc) and Ian Turk (NCDRA) put items in their newsletters.

More organising assistance for TPG – Angus Napier has taken on hosting groups in the park such as CVNZ, corporate volunteers, schools and scouts/guides. **Angus Napier**

WCC’s Jonathan Anderson previously listed tasks he could be involved in. He semi-retires after Easter. (See also ‘Ideas for future restoration’ below). **Jonathan Anderson**

128 Trelissick Crescent – This proposal for a multi-unit development above the park is back on the market again. It is a major concern because of environmental effects. (For more, see TPG website ‘Current Issues’ page). Bill Hester is monitoring. **Bill Hester**

Frances Lee has suggested that the community buy the site for inclusion in the park. **TPG**

Seat next to Bridge 7 – Being organised by Jenny Lewis. **Jenny Lewis**

Planting spades – Donated by the Douglass family after the Dorothy Douglass tree planting ceremony but subsequently found too difficult to dig holes in the shaley ground of the park. They have been re-donated via Anne Tuffin to a landscape gardening firm in Hawkes Bay who lost everything in the floods from cyclone Gabrielle.

History page on TPG website – Reorganised by Bill Hester.

Onslow Historians on OHS website – Keith Flinders of OHS says that *The Onslow Historians* are online at [www.onslowhistorical.nz](http://www.onslowhistorical.nz), also the WCC archives.

Ōtari Wilton’s Bush slip clearance 4 March – As promoted by WCC’s Tim Park. 30-40 volunteers cleared one tonne of rubbish. The plan is now to make the area safe with a digger, pull out trees next to the stream and plant this winter. This is likely to create sediment in Kaiwharawhara Stream (likely evident in Trelissick Park).

Ideas for future restoration – from Jonathan Anderson:

- A 400m<sup>2</sup> totara/matai grove on the flat upstream of bridge 7
- A study on low-cost solutions for stream bank protection/restoration (see links in Appendix on p.5)
- Repair by a mason of historic stone walls
- Replacement of bench seats/new seats elsewhere.

Sewage pollution from Kaiwharawhara catchment – Tim Park advised that as a result of incorrect domestic wastewater/stormwater cross connections in the catchment some stormwater enters the sewer line traversing the lower area of Ōtari Wilton’s Bush. During heavy rain the sewer line beyond Ōtari Wilton’s Bush cannot cope and the manhole cover next to the lower carpark lifts open, causing polluted stormwater overflow into Kaiwharawhara Stream. WCC/WW are working on a solution. **Tim Park**

Wasp problems – Debbie Hawker is mapping wasp nests. These are sometimes to be found next to clear areas near water. Jenny Lewis has volunteered to work with her on Vespex poison lines. **Debbie Hawker/Jenny Lewis**

Article on wasps – Debbie Hawker will write a short article for the next TPG newsletter *Gorge Gazette* (due early/mid-April). **Debbie Hawker**

[Rotting/confusing dog exercise maps – Bill Hester reports that at entrance 4 the dog exercise area map attachment backing has rotted and the map has fallen off. He predicts similar for the signs at other entrances.

The signs are next to the park map-boards and are confusing (different orientation) and add clutter. Are they necessary? **Tim Harkness/Adam Groenewegen**

The meeting closed at 10.45 a.m.

Next meeting: **9.30 a.m. Tuesday [4 July 2023] – Ōtari Wilton’s Bush Visitor Centre.**

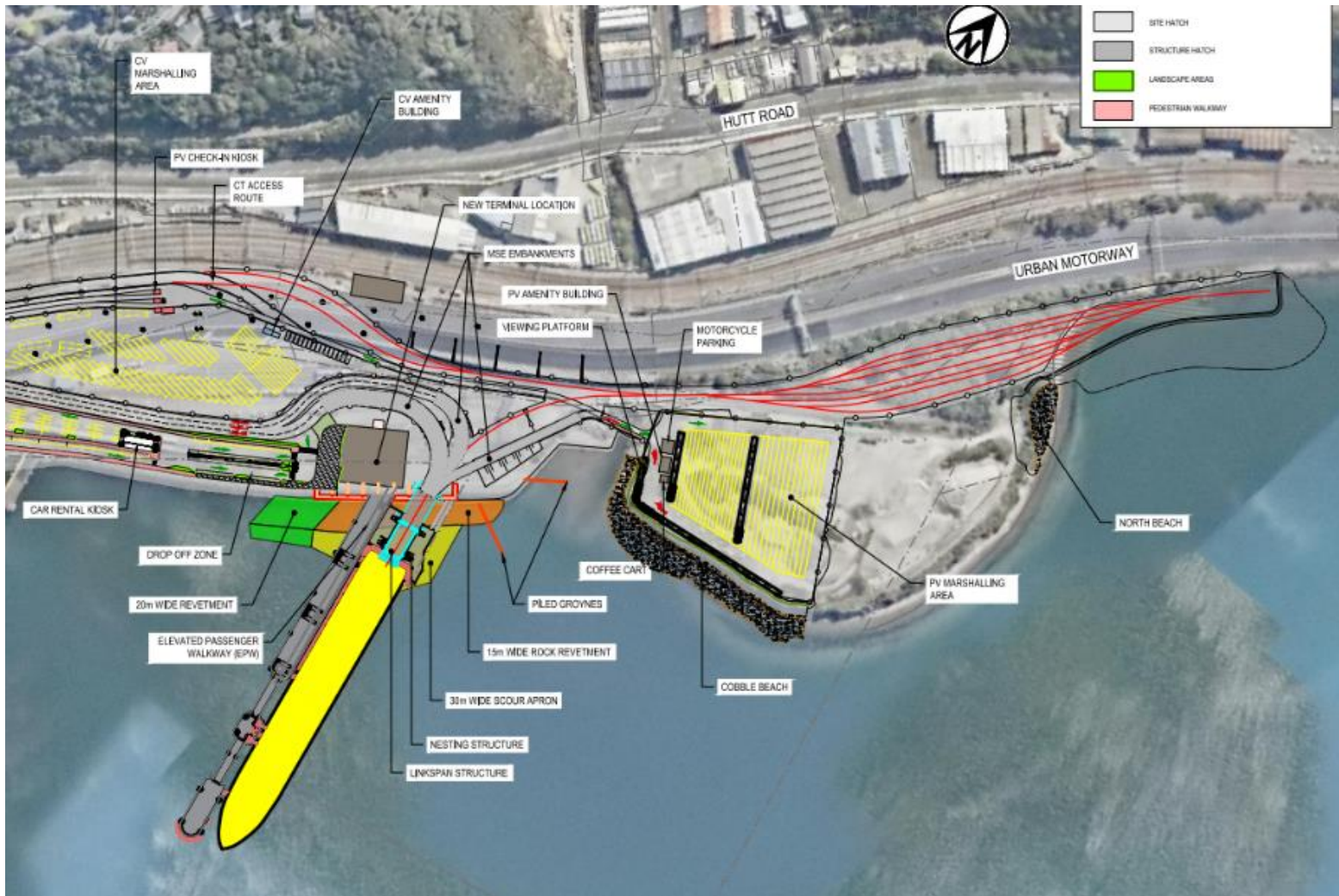
## APPENDIX

### STREAM BANK RESTORATION/PROTECTION LINKS

<https://riverthame.org/advice/dogs-and-water/>

[https://efotg.sc.egov.usda.gov/references/public/NM/BIO-48\\_The\\_Practical\\_Streambank\\_Bioengineering\\_Guide.pdf](https://efotg.sc.egov.usda.gov/references/public/NM/BIO-48_The_Practical_Streambank_Bioengineering_Guide.pdf)

# FERRY TERMINAL MAP



Membership drawn from Highland Park Progressive Association Inc., Ngaio Crofton Downs Residents' Association Inc., Onslow Historical Society Inc., Private Landowners' Group, Royal Forest and Bird Protection Society Inc. (Wellington Branch), Wellington Botanical Society Inc., Wadestown Residents' Association