

# Gorge Gazette

## News about Trelissick Park, the Ngaio Gorge and Streams

(Footbridges over the stream are numbered from 1 – 6 going downstream.)

### Abbreviations:

WCC Wellington City Council

GG Gorge Gazette

GW Greater Wellington Regional Council

TPG Trelissick Park Group

NCDRA Ngaio Crofton Downs Residents' Association

OMB Old man's beard

Website [www.trelissickpark.org.nz](http://www.trelissickpark.org.nz) (includes past Gorge Gazettes and Park map)

Facebook <https://www.facebook.com/TrelissickParkGroup>

## JUNE 2019

### Water under the Bridge

The long and woeful story is behind us and the Kaiwharawhara Stream footbridge project for the access from Oban Street is advancing steadily. Completion celebrations should be a year away. Already we have discovered a local outlet for Oban Single Malt Scotch whisky.<sup>1</sup>



This is an update:

- ENGEO have completed site geotechnical investigations.
- The bridge will be 140 m upstream of the debris trap (see photo at right and maps in the Appendix).
- Frame Group has been engaged for design, consenting and construction certification, on a shared WCC/TPG cost basis.

The bridge will be a longer version of Frame-designed Bridge 3 over Korimako Stream.

- Funds have so far come from the Ron and Edna Greenwood Environmental Trust, the Tararua Tramping Club's Michael Taylor Bequest and from generous donors. We now have just over \$66,000. The decision on our Transpower CommunityCare application will come later in the year.
- As an incorporated society, NCDRA have kindly agreed to handle financial transactions on our behalf.

Our 'Givealittle' page at <https://givealittle.co.nz/cause/kaiwharawhara-stream-footbridge-for-new-trelissick> is still open for donations.

WCC and GW consenting and award of the construction contract will come later this year.

### A Year on the Verge

What could be better than a thickly-vegetated barrier to thwart the garden waste and rubbish dumpers? Many of the 1,000 plants from WCC this year are going onto the Trelissick Crescent verge, to supplement plantings over previous years. We have visions of thickets of Hebe arborea and mingimingi - rabbit fodder, we have discovered. So now the verge is adorned with green protectors. Most of the rabbits made themselves scarce when GW's shooter came the other night.

Most of the rest of the plants are destined for the large old landslip below the south-western end of the 'Forest Remnant Track', the slopes below the Northern Walkway leading up to Hanover Street and railway land upstream of Bridge 6 below Wadestown. WCC's weed-control contractor Kaitiaki o Ngahere recently dealt with these areas.

### Trouble at the Northern Frontier

We are worried in case a beautiful mature tītoki tree has to be cut down early next year. It is about 10 m tall and probably 200-300 years old. The existing wall below the upper end of Ngaio Gorge Road is undermined and the slope is moving. A 'batter slope' to bolster the wall below the road for earthquake strengthening is proposed by WCC's contractor WSP-Opus. This would encroach onto the original forest remnant area. The tītoki tree would go, as well as the large pine, macrocarpa and eucalypt trees.

Considering the cost of removing the large trees and the multiple land ownership in the area, we are hoping that WSP-Opus, after further investigation, will find that the alternative of a new wall with deep piles is viable instead.

If the batter slope option is finally decided, we will be removing some valuable seedlings from the area. The slope would be re-planted afterwards.

### **A Plea for more Mess**

Frances Forsyth of Wildlands says we should not be too assiduous in clearing the debris trap or the stream beds - shelter for native fish and eels. In similar vein, new WCC Ranger Adam Groenewegen wants to leave the pile of debris we took out of the debris trap, to encourage insects and lizards.



### **The Plastic Plethora**

A Kaiwharawhara Estuary Cleanup was organised by Ben Knight of Sustainable Coastlines with Amanda Dobson of Enviroschools and Amanda Valois of NIWA (who is studying rubbish/plastic in the Kaiwharawhara catchment). The group worked along 60 m of the estuary, collecting 4 m either side of a tape at mid-tide level. An astonishing 2,402 mostly small plastic items totalling 16.9 kg were collected and analysed.<sup>2</sup> They came from the catchment and harbour. The exercise will be repeated in June, September and December.

### **Kaiwharawhara Catchment Plastic Project**

Jorge Jimenez from Mountains to Sea Wellington is working with Amanda Valois of NIWA looking for volunteers to periodically empty stormwater filters called 'LittaTraps'. These are baskets installed at the grids in street gutters. Scientists will audit the plastics collected - useful to understand how plastic starts its journey to the ocean.

The study will also monitor in-stream so Jorge is looking for people to run transects collecting rubbish in the Park.

Contact Jorge at [jorge.jimenez@mtsw.org.nz](mailto:jorge.jimenez@mtsw.org.nz) if you are interested in either project. Deidre Burke and Angus Napier already have for 'LittaTraps'.

### **A Fowl Sideline**

Trelissick Park as a free-range poultry farm? Barry Young says that poultry love tradescantia. He says "I got a bagful of the stuff for mine and next day all was gone...it makes amazing eggs." An incentive for our visitors to remove some for their hens at home? And a win for the Park.

### **More on Tradescantia**

Our volunteers slavishly remove every piece to a heap and WCC's contractor Kaitiaki o Ngahere has just completed a marvellous spraying job on the slopes below Wadestown.

Meanwhile, Landcare Research is still investigating various leaf/stem beetles and a fungus.<sup>3</sup>

### **Malcolm McDonald**

Sadly, Malcolm died on 20 March. He was TPG's diligent Secretary between 2006 and 2008 - a period of great activity. Until recently he organised our annual Sea-Week beach clean-up at the Kaiwharawhara estuary. He also moved vast quantities of mulch to cover the cut-gorse slope below Trelissick Crescent and transferred rocks and gravel from one side of the Korimako Stream to the other to protect the eroded track.

### **From the Coal-face**

A trawl through our Facebook page will cover our working bees, plant delivery, visits by Conservation Volunteers and St Benedict's School - complete with photos. Thanks to all.

Warrick Fowlie has adopted the 57 Kaiwharawhara Road area (next to 'The Living Room'). We transformed it from a weedy nightmare over the last few years, helped by Conservation Volunteers. At the Park entrance from upper Ngaio Gorge Road his plantings are thriving.

Joan Waldvogel has been joined by Anne Tuffin to work on clearing and planting below the Hanover Street entrance.



Tim McIvor continues to maintain the lower Ngaio Gorge Road entrance.

Welcome to Howard Moore, who has joined TPG as the NCDRA representative.

Barry Durrant reports that the traps on the slope below Oban Street yielded a record of 9 rats in April. (Most of those traps are Goodnature A24 self re-setting type).

Marilyn and Bill Hester have returned to 'The Flood Plain', just upstream of the magazine building ruin, bent on it going forward, not backward. 15 years ago it was a bare plain of weeds. Now it's transformed to a paradise of nīkau palms, kahikatea, pukatea and other species.

Thanks to Doug Tennant for his seedlings, resulting from birds perching in his garden and having bowel movements.<sup>4</sup>

### **The OMB Scourge**

OMB is even worse than usual. Bill Hester and Peter Reimann clambered around dodgy slopes, with murderous intent. Then we showed WCC's Illona Keenan and Kaitiaki o Ngahere more inaccessible outbreaks, which they kindly dealt with.

TPG liaised with 'Upstream – Friends of Central Park', who have combined with Wellington Forest & Bird and the regeneration projects in the nearby Tanera Gully and Polhill Reserve. Worried that OMB is on the way to taking over and smothering our forested areas, they are advocating for more effective management of OMB by GW across the region and by WCC locally.

In response to our submission on the GW 'Regional Pest Management Plan' GW say "... old man's beard is extremely difficult to eradicate and is very widespread ... there would be no benefit to adding old man's beard to the [Plan] as an identified pest species, given the extremely low likelihood of successful control or eradication."

It's shocking that OMB no longer has the priority that it did a couple of decades ago.

### **A Chequered Career**

The epiphyte *Collospermum hastatum* (kahakaha) came to us from WCC in 2015 and we lodged them in the forks of trees. Some perished, but this one is below the first 'zig' from the Hanover Street entrance - a juvenile 'widow-maker'.



**Appendix - next page...**

### **References**

1 - <https://www.obanwhisky.com/>

2 - <https://litterpickupstag.z8.web.core.windows.net/survey-view/77>

3 - <https://www.landcareresearch.co.nz/publications/newsletters/biological-control-of-weeds/issue-72>

4 - <https://animals.mom.me/birds-control-bowel-movements-7172.html>

### **Working Bees**

See website 'Projects' page for dates, locations and health and safety information.

### **Contacts**

Peter Reimann (04) 938 9602, [nz.peterreimann@gmail.com](mailto:nz.peterreimann@gmail.com)

WCC (reporting problems): (04) 499 4444,

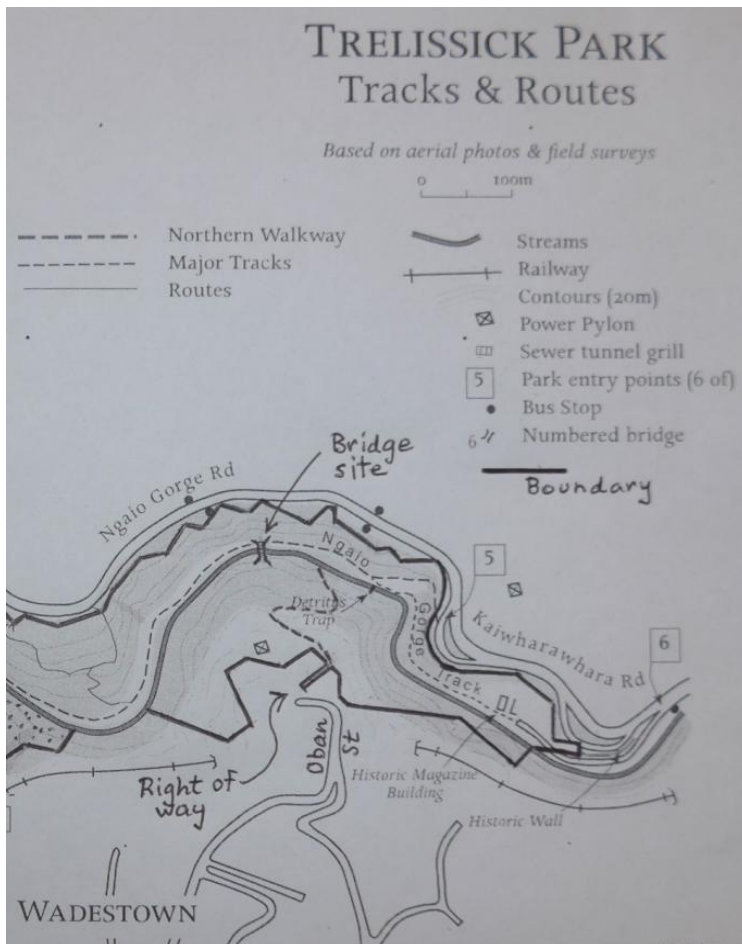
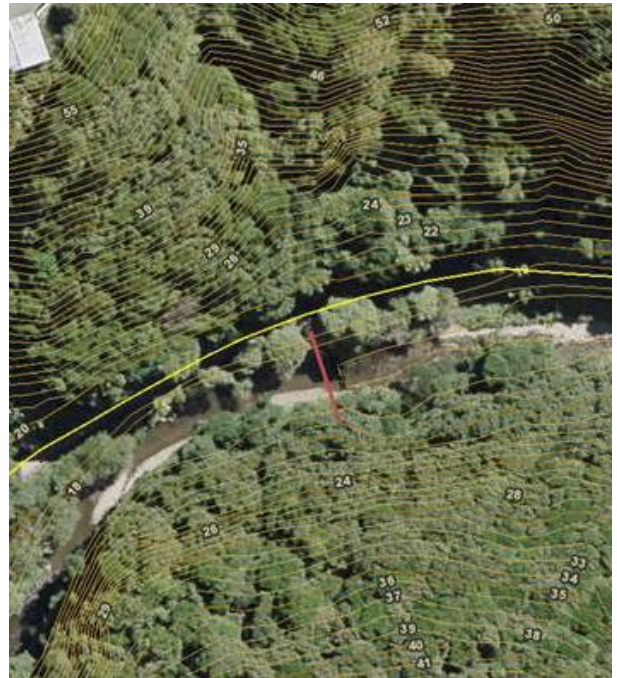
GW pollution hotline: 0800 496 734

## APPENDIX

### New Kaiwharawhara Stream Bridge Location

This photo-map is taken from ENGEO Ltd geotechnical report of 10 April 2019. The bridge, in red, is approximately 140m upstream of the debris trap.

The photo-map can be viewed in relation to Google Earth, accessed from the home page of our website, using the garage on Ngaio Gorge Road (top left corner) as a reference point. The yellow line indicates south edge of the vehicle track. The track will be re-positioned about 2 metres north at the bridge location to provide more room for the footings and steps.



The new footbridge location is shown on the map. TreliSSick Park boundaries on the map are indicated in heavy black lines. The boundaries show the large new area of the Park that will be opened up by the bridge for restoration - about 4-5 hectares.

Membership drawn from Highland Park Progressive Association Inc., Ngaio Crofton Downs Residents' Association Inc., Onslow Historical Society Inc., Private Landowners' Group, Royal Forest and Bird Protection Society Inc. (Wellington Branch), Wellington Botanical Society Inc., Wadestown Residents' Association